

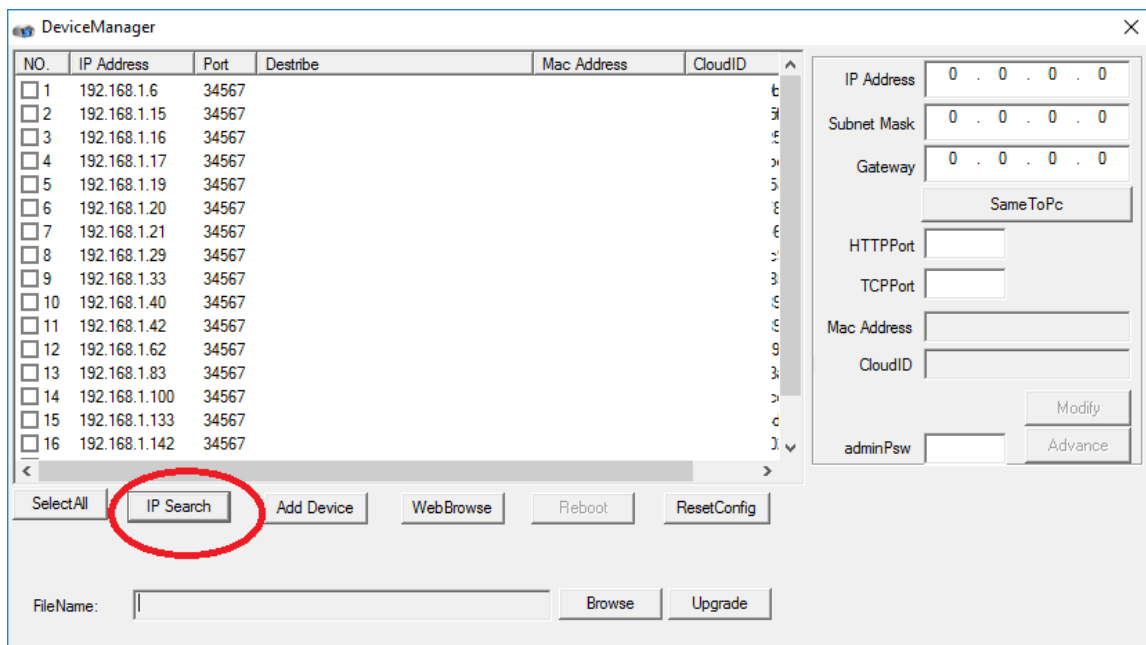
Setup on PoE NVR.

1. Connect the IP Camera to your Router/Switch. (Power up by 12vDC Power adapter, if you don't have PoE Switch/PoE injector)

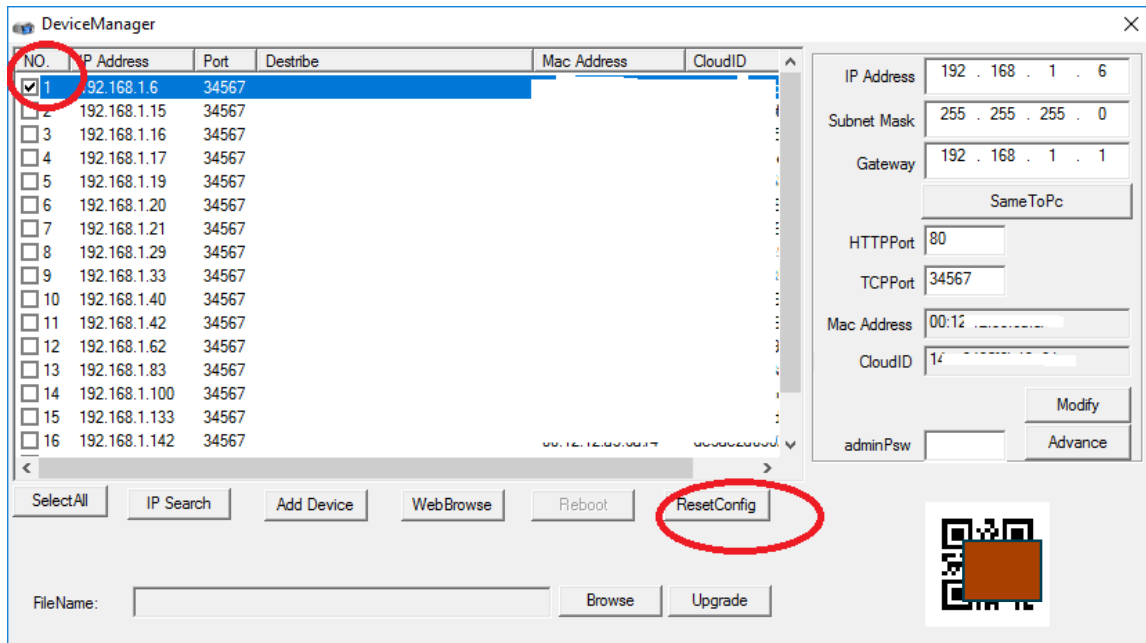
-Device Manager Software (inside the Mini CD - Tool Folder- Config-Tool) to search the IP Camera.

Download Link (<http://njwss.com/download/DSC-IPCamera/DSC-Series-Tool-XM.zip>)

2. Use the IP Camera software tool to search the IP Camera. After search the IP Camera. You will see ALL DSC Series IP Camera on your network. (Figure 1)



3. Select the IP camera and Do the **ResetConfig**. Then the IP Camera ip address will go back to **192.168.1.10**. (Figure 2)

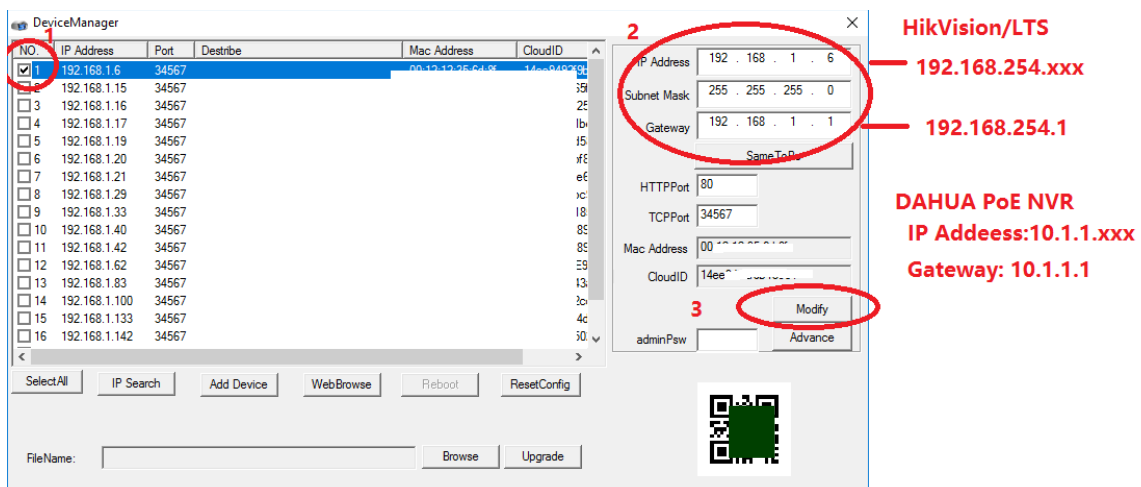


4. Log in your **HikVision/LTS/Swann/WBox** NVR go to IP Camera setting. On there have the IP address for each Camera, you need to Match these IP address to the IP Camera.

*******DAHUA/Lorex PoE NVR—Main menu-Setting-Network-Switch (default IP: 10.1.1.1)**

*****Other manufacture PoE NVR, Please contact us****

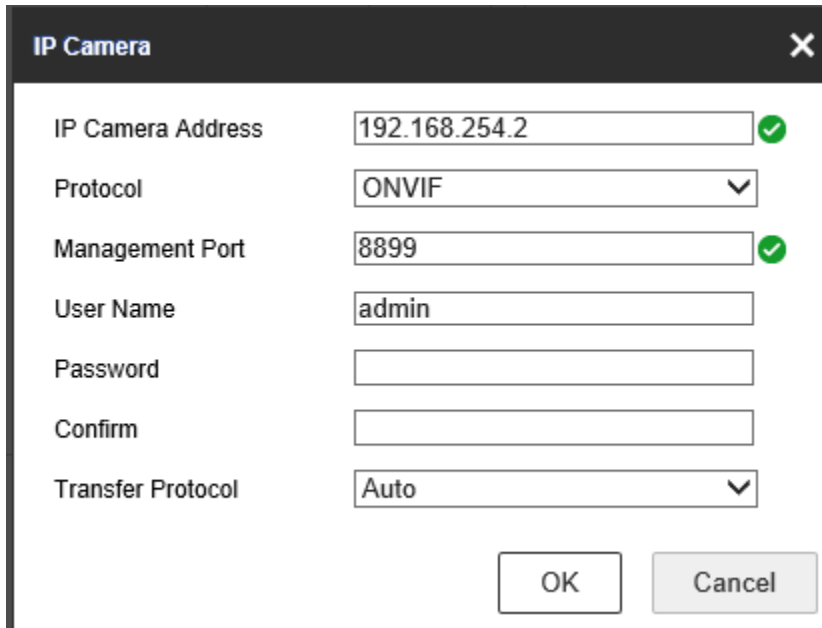
5. On the IP Camera Software tool (device Manager), you can use this software (Device Manage) to change the IP camera address. (Figure 3). Input the IP address for Camera. And Click **Modify**.



DSC Technology LLC/DiySecurityCameraWorld
Email: sales@diysecuritycameraworld.com Tel: 267-686-7731

6. After match the IP Address, you can plug the IP Camera to the NVR, and go back the NVR IP Camera setting, to change the (Protocol to ONVIF, and Management Port to 8899)

Example on **HikVision/LTS/Swann/WBox NVR**: channel (2) on the NVR then the IP address for the IP camera is **192.168.254. 2**, Gateway: **192.168.254.1**



The image shows a configuration window titled "IP Camera" with a close button (X) in the top right corner. The window contains several input fields and dropdown menus:

- IP Camera Address:** A text input field containing "192.168.254.2" with a green checkmark icon to its right.
- Protocol:** A dropdown menu with "ONVIF" selected and a downward arrow.
- Management Port:** A text input field containing "8899" with a green checkmark icon to its right.
- User Name:** A text input field containing "admin".
- Password:** An empty text input field.
- Confirm:** An empty text input field.
- Transfer Protocol:** A dropdown menu with "Auto" selected and a downward arrow.

At the bottom of the window, there are two buttons: "OK" and "Cancel".

DSC Technology LLC/DiySecurityCameraWorld
Email: sales@diysecuritycameraworld.com Tel: 267-686-7731

Example 2: channel (1) on the **DAHUA/Lorex PoE** then the IP address for the IP camera is **10.1.1.10**, Gateway: **10.1.1.1**



IP Address: 10.1.1.10, HTTP Port: 8899, Username: admin, no Password

